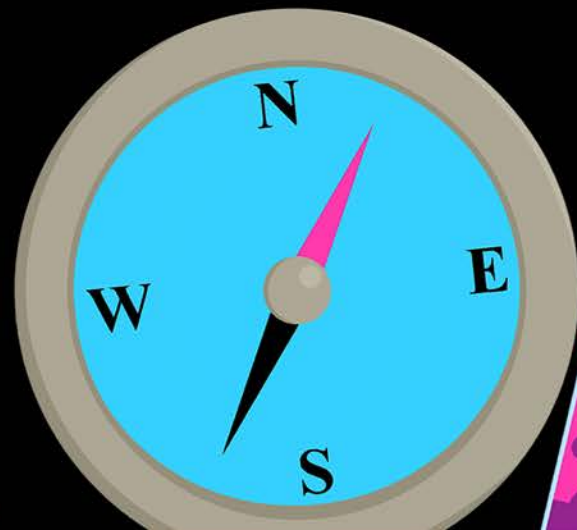
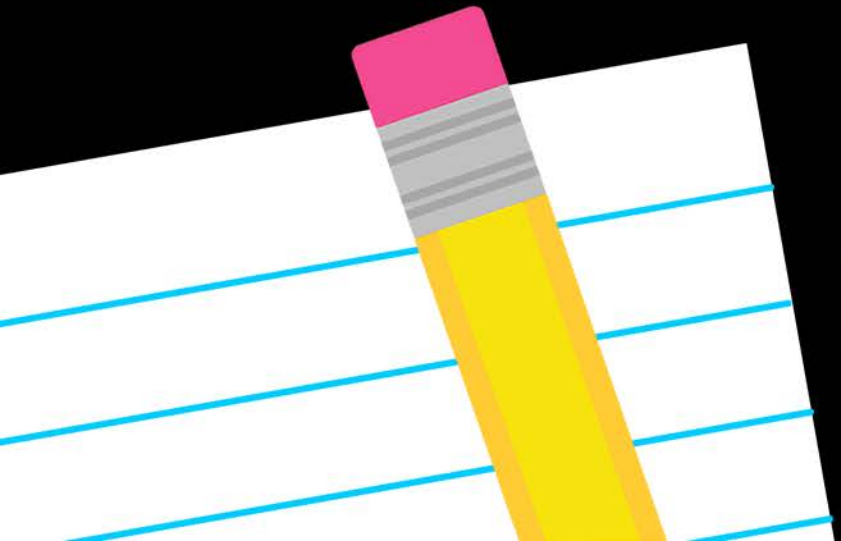


Welcome,
Families!



Teacher Introduction

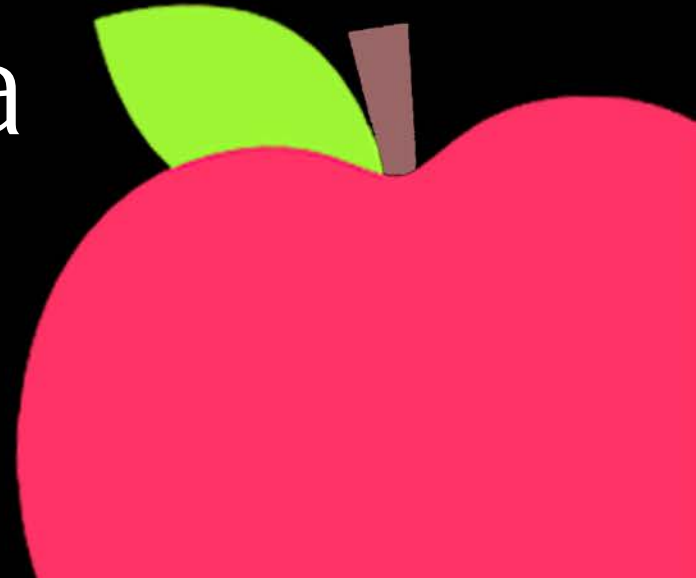
Ms. Harvey

Mrs. Housego

Mrs. Leach

Mrs. Mendonca

Mrs. Qualls



Classroom Expectations

- We are stressing responsibility this year as we strive to get students ready for Middle School.
- Keeping up with and completing assignments are stressed daily.
- Homework and important information should be written in the planner daily and checked.
- Students will be held accountable for missing and incomplete work and points will be deducted.



Classroom Expectations

- Students will be given time for Make-Up work when they are absent and assignments will also be noted in Skyward.
- There will not be retakes for tests



Classroom Expectations

- Please note that folders and notebooks hold onto notes and important papers that relate to our benchmarks. Feel free to look through your child's work; but, please do not remove it!
- Respectfulness will ALWAYS be the expectation. Our classroom rules are centered around this philosophy.



MTSS

(What is Multi-Tier System of Supports (MTSS)?

A practice of providing high quality instruction and interventions matched to student need, monitoring progress frequently to make decisions about changes in instruction or goals and applying child response data to important educational decisions.

- Tier 1
- Tier 2
- Tier 3



Reading

Time: 10:15-11:50 (Wednesday 9:30 – 11:00)

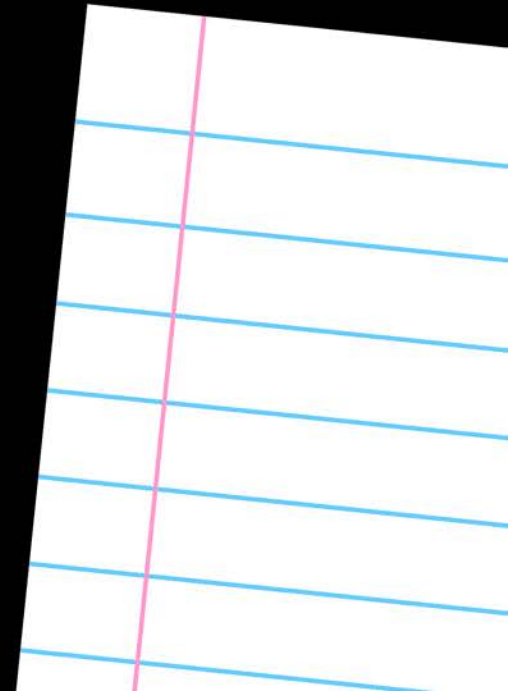
- This year we are reading a selection of fiction novels to model critical thinking and develop a love of reading.
 - The students are expected to respond to text based questions with detailed responses that include elaborations and text evidence.
 - Small Group Instruction will focus on specific skills and individual needs.
 - OPEN BOOK TESTS



Writing

Time: This is a part of our ELA block with Reading.

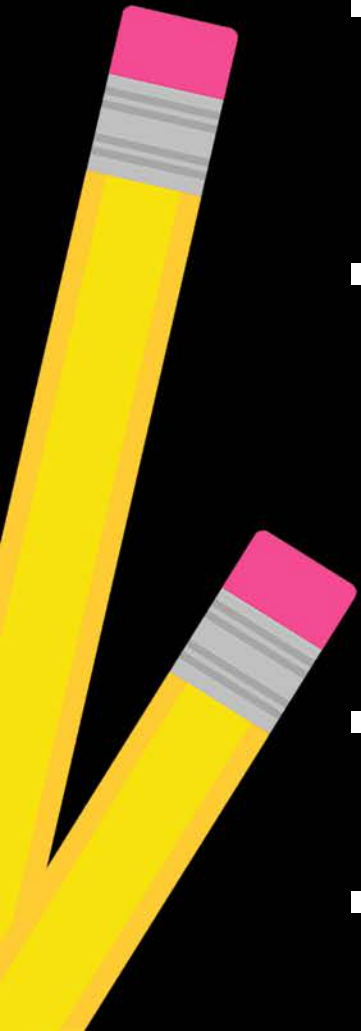
- The writing portion of FSA will require students to read multiple texts/diagrams, plan, & respond to an opinion or informative prompt.



Math

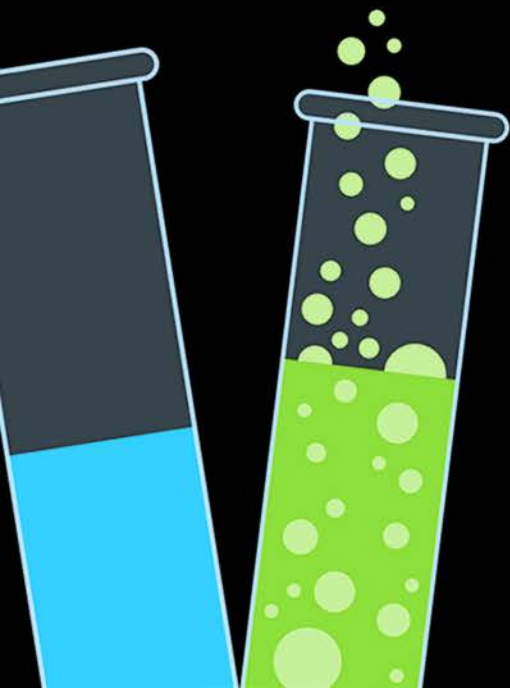
Time: 12:30 – 1:30

- Students must know their basic math facts!
- Students will also complete the FSA in math which will require them to solve multi-step problems and open ended responses.
- Textbooks are available online.
- Tests ARE NOT open book.



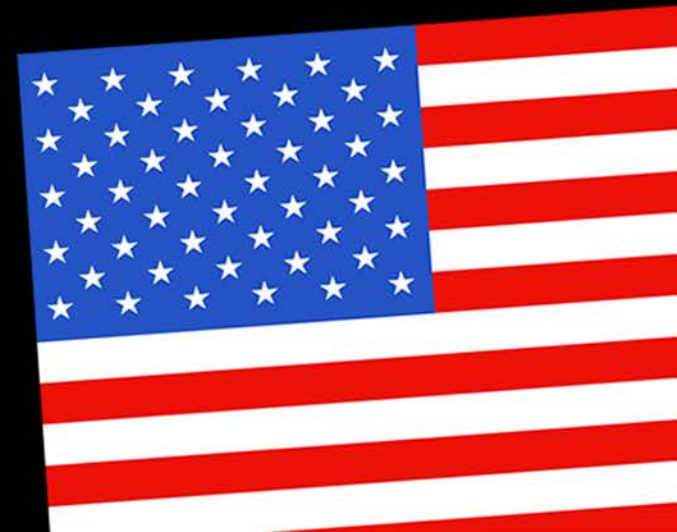
Science

- Notes will be recorded in the Science notebook.
- Tests will expect students to apply what they have learned and interpret data. Students WILL be able to use their chapter study guide but WILL NOT be permitted to use their books or notebooks.
- Students complete a spiral science activity weekly to help prepare them for Science FCAT. This assignment is graded.




Social Studies

- Social Studies tests WILL be open newspaper and will require students to use text features to help locate key information.
- We are teaching note taking, text marking and highlighting strategies.



SKYWARD

- 
- Please check Skyward regularly. Log in through launch.
 - All subject areas will be weighted with the following categories:
 - 20% - Classwork
 - 35% - Quizzes
 - 45% - Tests (You will receive notification about tests dates ahead of time.)
 - Students must earn A's and B's and ALL S's to be considered for Honor Roll.

BEHAVIOR

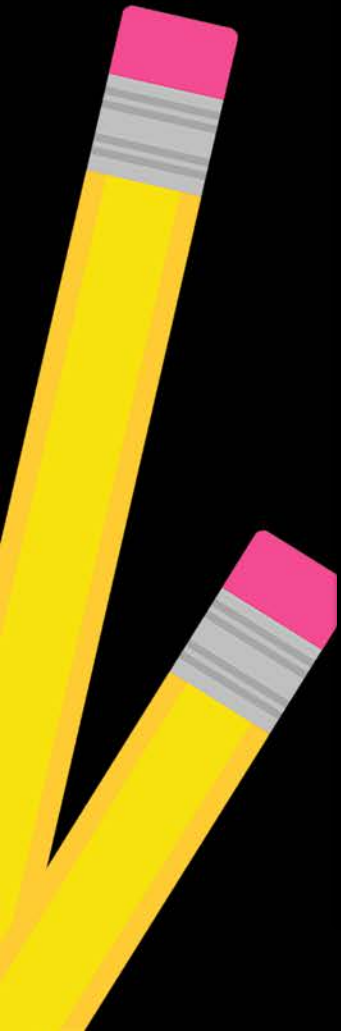
Bullying v. Mean Behavior

Bullying Definition:

The district has given this definition of Bullying:

Bullying is:

- Systematically
- Repeated
- Chronic- over a period of time
- Inflicting physical hurt and/or psychological distress
- Places the person in reasonable fear of harm
- Interferes with the education environment



I-READY

- I-Ready is a school wide expectation. Students should complete and pass one reading and one math lesson weekly and complete at least 45 minutes a week in each subject.
- Strive for 45!
- Students will be given ample time to meet this goal in school but are welcome to work on it at home.



Homework Assignments

- Homework will be given nightly (Monday-Thursday) to reinforce skills taught in school.
- Students should use their class notes to help them with their homework. This will also help in preparing for tests.
- Reading and Math homework will take place each day. Occasionally students will be asked to pre-read for Science and Social Studies.



Spelling

- Spelling grade level words and words on the page correctly is always the expectation.
- Points will be deducted on assignments for misspellings and improper use of basic grammar skills.

tion
sion

Fieldtrips

- Symphony – Usually the Fall
- Additional trips – Busch Gardens
- Please be sure you have taken a moment to sign up through ADDitions to be an approved volunteer if you are interested in chaperoning.





Questions?

